

SUPA SCHOOLS NATIONAL ARENA CHAMPIONSHIPS 2024



We are looking forward to seeing you!

Rugby Polo Club,
Onley Grounds Equestrian Complex, Onley
Grounds Farm, Willoughby, Rugby, Warwickshire
CV23 8AJ. Tel: 01788 817724.
what3words: circle.scan.buggy

KEY POINTS FOR ARRIVAL

USING A SAT NAV:

Use the Post Code CV23 8AJ, this will take you to the top of the drive. Alternatively, what3words: circle.scan.buggy will take you into the complex which is around a ½ mile down the drive.

NO PARKING: on the drive or grass verges between the entrance and the car park. Lorries at the front of the car park; cars at the back. Please can cars leave a space of at least a vehicles length between the rows to allow everyone egress.

Parking between lorries/trailers is to be well spaced.

DAY LORRIES: if in any doubt; call Philip Baker personally on arrival to get assigned a parking space : 07801 033 834

GENERAL POINTS

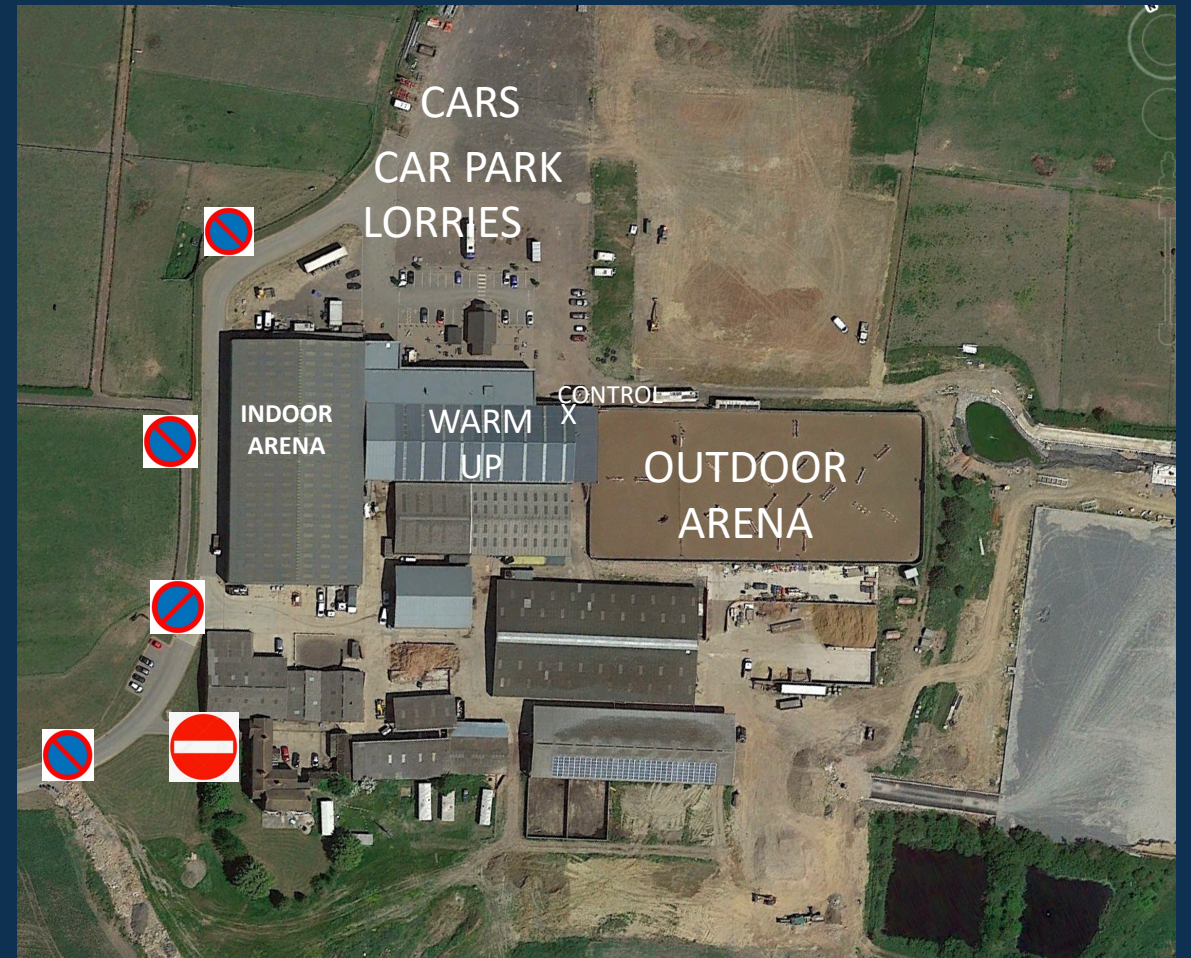
CATERING: On site consists of a Nosebag Café & Chukka bar, open all day and the Forge Restaurant, open at certain times of the day. (see OGEC website).

OUR SPONSORS: RJ Polo and Black Hound Sports will be on site as well as the Willoughby Park Polo Gear Shop, for all your polo needs. Also KB Photography.

RESPECT your fellow students, SUPA staff, Onley Grounds EC Staff, your Coaches and Umpires.

HORSE HIRERS AND PLAYERS WITH OWN PONIES:

Please bring horse passports and ensure flu vaccinations are up to date.



Horse Hirers and Coaches and any players who are bringing Horses to this event.
Please make sure that you have your valid REL, where appropriate. Also all your horses' passports.
Also that all horses are vaccinated as per current HPA guidelines. See Link & Below:
<https://hpa-polo.co.uk/pony-welfare/vaccinations/>

Vaccination Rules

The HPA vaccination rules are designed with the short polo season in mind and allow for a small amount of flexibility for annual boosters to be given within the March/April window, **but you are reminded that these rules may not be in line with other associations, disciplines, or jurisdictions.**

Any horse receiving a new primary course as of 1 January 2024 must be vaccinated as follows:

V1 (initial vaccination);

V2 (second vaccination) must be administered 21-60 days after V1 and;

V3 (first booster) must be administered 120-180 days after V2.

Once a horse has completed its primary course (V1, V2 and received V3), it must then receive a booster vaccination annually thereafter, either within 365 days OR anytime within the calendar window of March and April (having been vaccinated in the March/April window the previous year).

Any horse playing polo, or being used for umpiring, must have received either a second primary or a booster vaccination **within the preceding 6 months and 21 days, but not within the preceding 7 days.**

If the deadlines for the second primary vaccination, first booster vaccination, or annual booster are missed, then the pony will need to restart the primary course.

For horses first vaccinated before 1 January 2024

- Horses first vaccinated between 1 January 2018 and 31 December 2023 must have two primary vaccinations given no less than 21 days and no more than 92 days apart and a third booster vaccination given no less than 150 days and no more than to 215 days after the second primary vaccination and booster vaccination annually thereafter (but not necessarily within 365 days).
- Horses first vaccinated between 1 Jan 2016 and 1 January 2018 must have two primary vaccinations given no less than 21 days and no more than 92 days apart and a third booster vaccination given no less than 90 days and no more than to 215 days after the second primary vaccination and booster vaccination annually thereafter (but not necessarily within 365 days).
- Horses first vaccinated between 1 Jan 2014 and 1 Jan 2016 must have received two primary vaccinations given no less than 21 days and no more than 92 days apart and booster vaccinations annually thereafter (but not necessarily within 365 days).
- Horses first vaccinated prior to 1 Jan 2014 must have received booster vaccinations annually (but not necessarily within 365 days) from the year they received their first vaccination.

We greatly appreciate the support given to us by our sponsors.

