

SUPA UNI NATIONAL ARENA CHAMPIONSHIPS 2024



We are looking forward to seeing you!

Rugby Polo Club,
Onley Grounds Equestrian Complex, Onley
Grounds Farm, Willoughby, Rugby, Warwickshire
CV23 8AJ. Tel: 01788 817724.
what3words: circle.scan.buggy

KEY POINTS FOR ARRIVAL

USING A SAT NAV: Some Sat Navs, when using the CV23 8AJ post code, miss the exit off the M45

Use the Post Code CV23 8AH, this will take you to the top of the drive; what3words will take you into the complex which is around a ½ mile down the drive.

NO PARKING: on the drive or grass verges between the entrance and the car park. Lorries at the front of the car park; cars at the back. Please can cars leave a space of at least a vehicles length between the rows to allow everyone egress.

Parking between lorries/trailers is to be well spaced.

DAY LORRIES: must call Philip Baker personally on arrival to get assigned a parking space : 07801 033 834

GENERAL POINTS

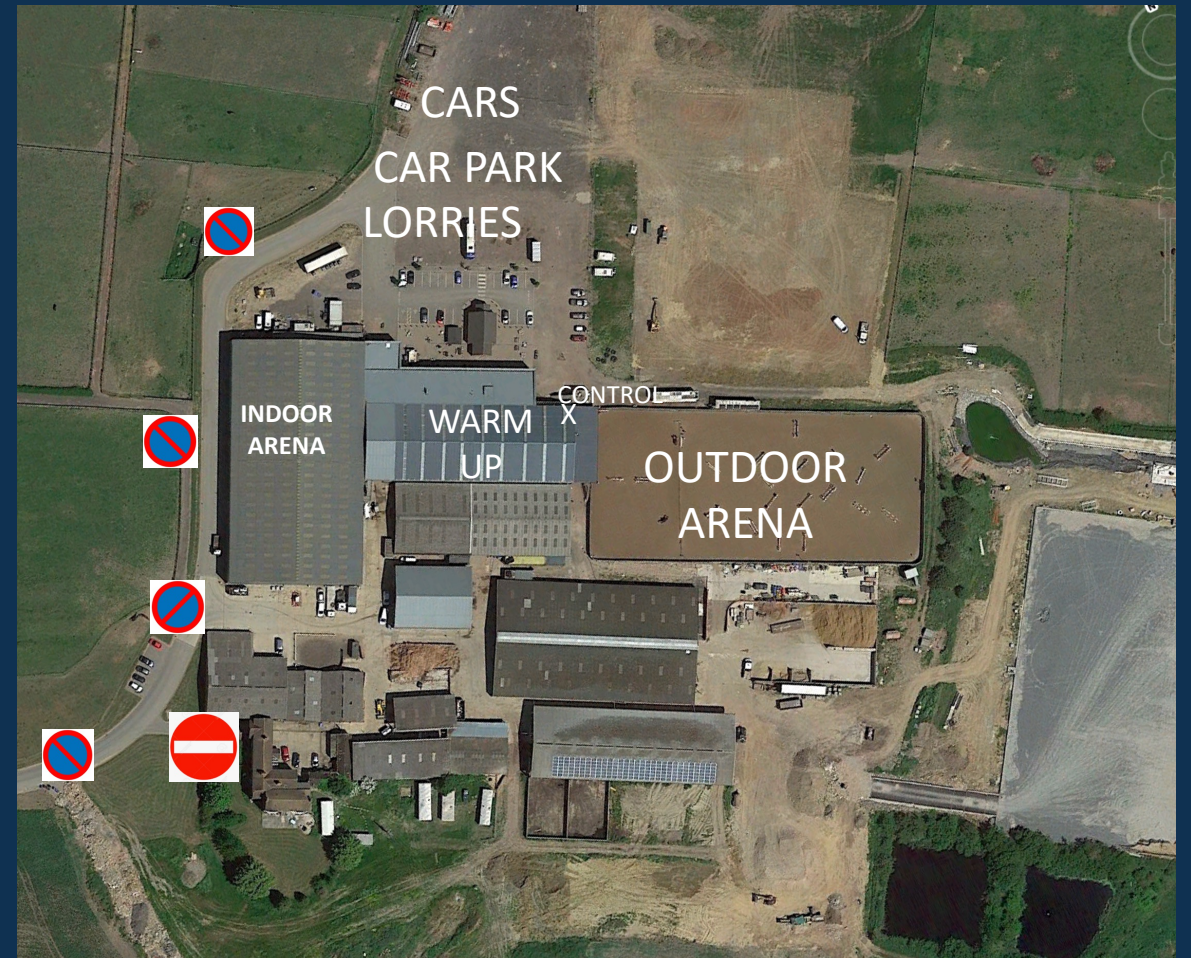
CATERING: On site consists of a Nosebag Café & Chukka bar, open all day and the Forge Restaurant, open at certain times of the day. (see OGEC website).

OUR SPONSORS: RJ Polo and Black Hound Sports will be on site as well as the Willoughby Park Polo Gear Shop, for all your polo needs.

RESPECT your fellow students, SUPA staff, Onley Grounds EC Staff, your Coaches and Umpires.

HORSE HIRERS AND PLAYERS WITH OWN PONIES:

Please bring horse passports and ensure flu vaccinations are up to date. See details on page 4



Equipment

All players MUST wear kneepads. Eye protection is recommended. **Spurs are not allowed to be worn in SUPA tournaments.**

All helmets/ hats MUST comply with current safety guidelines and you must have your hat tagged with a SUPA tag.

Location at our sponsors stand, RJ polo, to do this on site.

Please paste the link below into your browser to see a list of approved hats:

<https://hpa-polo.co.uk/download/2023-Helmet-Rules-for-HPA-website-v16.pdf?fbclid=IwAR0j6lRCKFFtTu8KonG9guZiHc-TkPpRVU03vTwFa9xZxTa57w9lcXo1NU>

Pitches/Arenas

When you arrive in the warm up area, please check in with a marshal, who will be wearing a hi viz jacket. They will check that you are in the correct team, in the correct arena, and at the correct time. The marshals have walkie-talkies, so look for a marshal if you need to communicate with us.

Only walking horses in the warm up arena and no practice shots.

During matches, where there is doubt regarding a goal standing or not, the **Umpire's** decision is final.

SUPA does not recognise or use VAR at present.

Check Scores at the end of your match with your umpire. Once you leave the pitch, the score stands.



Safety and Rules



Please make sure that you are wearing the correct protective-wear.

Please read our rules, if in doubt:

<https://www.supa.org.uk/universities/supa-rules-for-universities/>

<https://www.supa.org.uk/w-content/uploads/2022/12/Uni-SAPA-Player-Ability-Division-Rules11-copy.pdf>





A paramedic and a technician will be on site at all times during the day. However, when play has finished, they will leave.

Any accidents outside of this time must be reported the next day. Please acquaint yourselves with the location of the nearest A & E Department:

Warwick Hospital, Lakin Road,
Warwick CV34 5BW.

University Hospital Coventry
(Walsgrave Hospital) Clifford Bridge
Road CV2 2DX

Please put any
rubbish in the
bins provided..

There will be a prize giving ceremony, after play has finished on Sunday, for Winners, Second and Third placed teams in each division. The OPEN Prize giving will be after the finals on Friday.



There will be an exhibition match and organised players party on Saturday courtesy of Rugby Polo Club. Also other events each evening. Please ask at the bar for details and tickets.

Horse Hirers and Coaches and any players who are bringing Horses to this event.
Please make sure that you have your valid REL, where appropriate. Also all your horses' passports.
Also that all horses are vaccinated as per current HPA guidelines. See Link & Below:
<https://hpa-polo.co.uk/pony-welfare/vaccinations/>

Vaccination Rules

The HPA vaccination rules are designed with the short polo season in mind and allow for a small amount of flexibility for annual boosters to be given within the March/April window, **but you are reminded that these rules may not be in line with other associations, disciplines, or jurisdictions.**

Any horse receiving a new primary course as of 1 January 2024 must be vaccinated as follows:

V1 (initial vaccination);

V2 (second vaccination) must be administered 21-60 days after V1 and;

V3 (first booster) must be administered 120-180 days after V2.

Once a horse has completed its primary course (V1, V2 and received V3), it must then receive a booster vaccination annually thereafter, either within 365 days OR anytime within the calendar window of March and April (having been vaccinated in the March/April window the previous year).

Any horse playing polo, or being used for umpiring, must have received either a second primary or a booster vaccination **within the preceding 6 months and 21 days, but not within the preceding 7 days.**

If the deadlines for the second primary vaccination, first booster vaccination, or annual booster are missed, then the pony will need to restart the primary course.

For horses first vaccinated before 1 January 2024

- Horses first vaccinated between 1 January 2018 and 31 December 2023 must have two primary vaccinations given no less than 21 days and no more than 92 days apart and a third booster vaccination given no less than 150 days and no more than to 215 days after the second primary vaccination and booster vaccination annually thereafter (but not necessarily within 365 days).
- Horses first vaccinated between 1 Jan 2016 and 1 January 2018 must have two primary vaccinations given no less than 21 days and no more than 92 days apart and a third booster vaccination given no less than 90 days and no more than to 215 days after the second primary vaccination and booster vaccination annually thereafter (but not necessarily within 365 days).
- Horses first vaccinated between 1 Jan 2014 and 1 Jan 2016 must have received two primary vaccinations given no less than 21 days and no more than 92 days apart and booster vaccinations annually thereafter (but not necessarily within 365 days).
- Horses first vaccinated prior to 1 Jan 2014 must have received booster vaccinations annually (but not necessarily within 365 days) from the year they received their first vaccination.

We greatly appreciate the support given to us by our sponsors.



POLO
TIMES

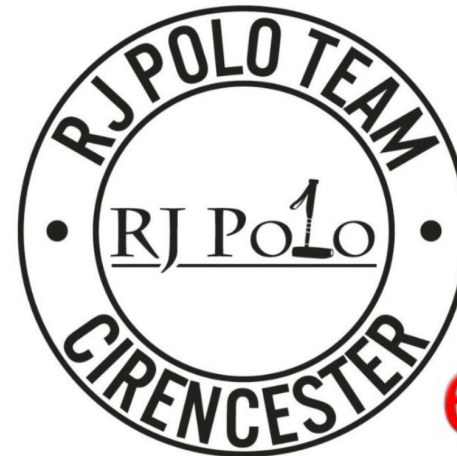


HURLINGHAM POLO
ASSOCIATION



Black Hound
SPORTS

THE WORSHIPFUL COMPANY OF
SADDLERS



emmpix.co.uk
Emma Gann Photography & Design